

Halton Region Master Gardeners

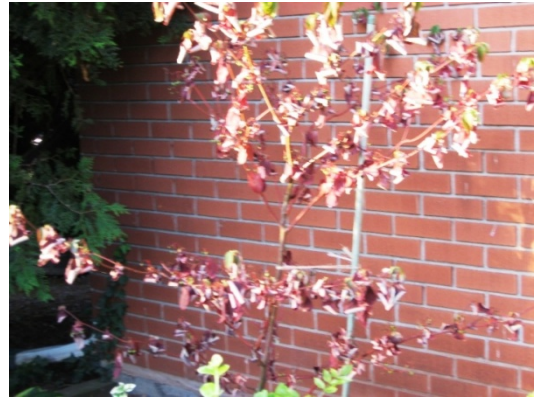
Come Grow With Us



Pagoda Dogwoods and Meadow Rue Leaves Shriveling Up

Attached are pictures of my pagoda dogwoods and meadow rue. Does anyone know what is turning the leaves red and causing them to shrivel up. I am worried.

Karen



Hi Karen,

Both plants are losing chlorophyll in their leaves, this suggests something is preventing them from supplying the proper nutrients. Given *Cornus alternifolia* and *Thalictrum* spp. are in very distinct orders, *Cornales* and *Ranunculales*, and share few diseases, I would look at abiotic causes. My guess is root damage (rot). These plants look relatively young and have been planted next to the house. This can be a very difficult area to get things established. The eaves can prevent the area from receiving water in rain events and or they can receive a deluge of water from runoff from downspouts. Feast and famine can damage the roots and the plants cannot draw in nutrients. Therefore, they reduce their foliage to match the reduction in root mass.

Catherine